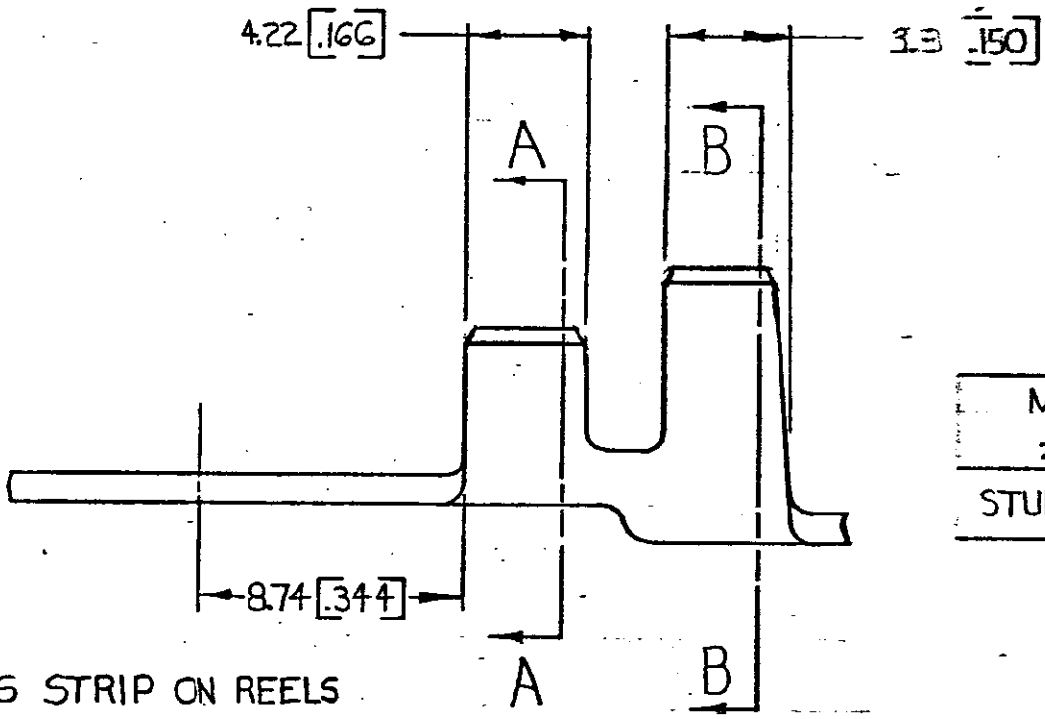
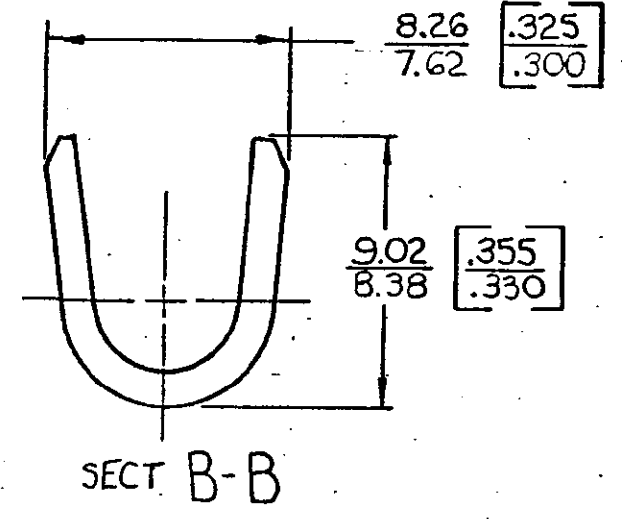
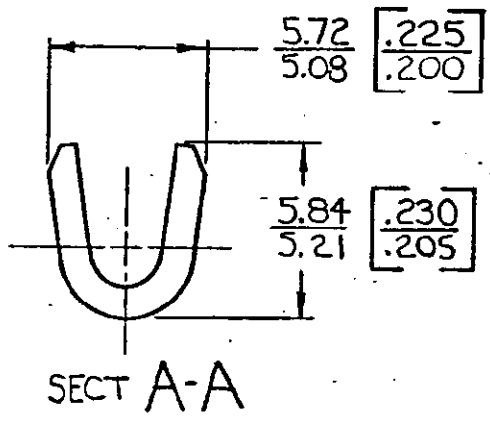
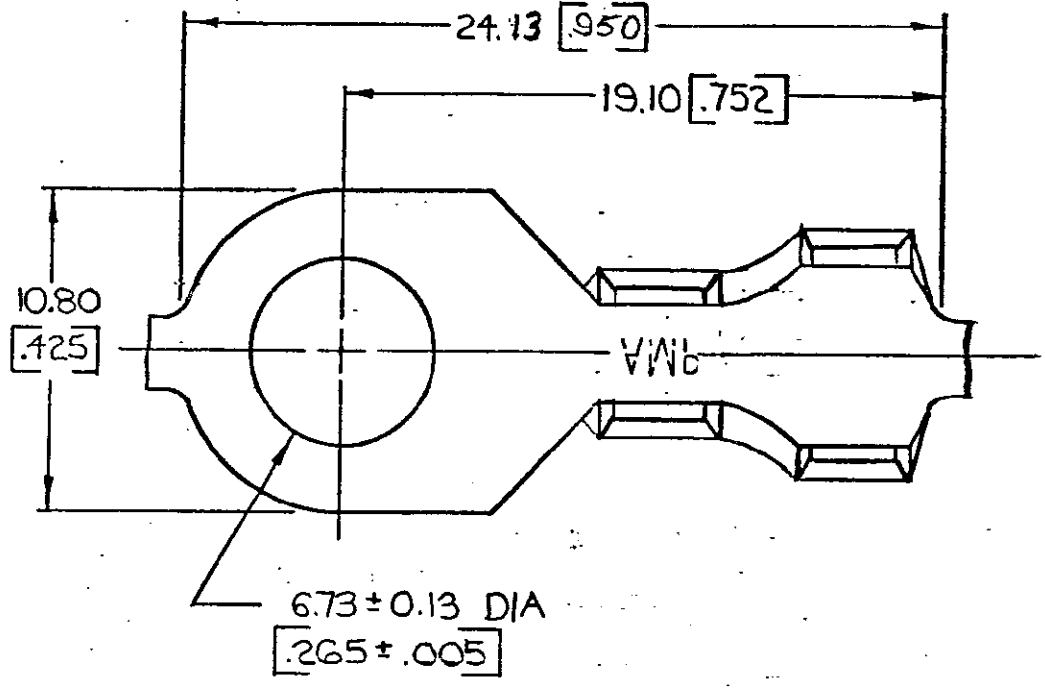


© COPYRIGHT 1968 BY AMP INCORPORATED, HARRISBURG, PA. ALL INTERNATIONAL RIGHTS RESERVED. AMP INCORPORATED PRODUCTS COVERED BY U. S. AND FOREIGN PATENTS AND/OR PATENTS PENDING.

		REVISIONS			LOC	DIST
P	F	ZONE	LTR	DESCRIPTION	DATE	APPROVED
			A	REDRAWN & REVISED A-3943	4-26-78	DG
			B	REVISED PER A-5939	4/15/83	SS/yl
			C	REV PER AF-8047	8/18/92	PAE BT
			D	REV PER D710-037-96	12/6/92	PAE/64



MG 1/4	2.0 - 3.0 mm ² [4 - 12]	4.32 - 5.33 [.170 - .210]	NONE	102 BRASS [040]	41604
STUD SIZE	WIRE RANGE	INSULATION RANGE	FINISH	MATERIAL	PART NO

UNLESS OTHERWISE SPECIFIED DIMENSIONS ARE IN INCHES. MM TOLERANCES ON DECIMALS ±0.38 [0.15] ANGLES ±1°0'	CONTRACT NO	AMP INCORPORATED Harrisburg, Pa.
	DR Donald Q Wood 4/26/79	
MATERIAL SEE TABLE	CHK James D Davis 7-20-78	NAME RING
	APPD R.P. Franz 8-10-78	
FINISH SEE TABLE	APPD G. Zwick 8-10-78	DRAWING NO 41604
	DSGN APPD	
OTHER APPD	SIZE B	CODE IDENT NO 00779
	SCALE	SHEET

1. CONTINUOUS STRIP ON REELS
2. DIMENSIONS IN BRACKETS ARE IN INCHES

METRIC